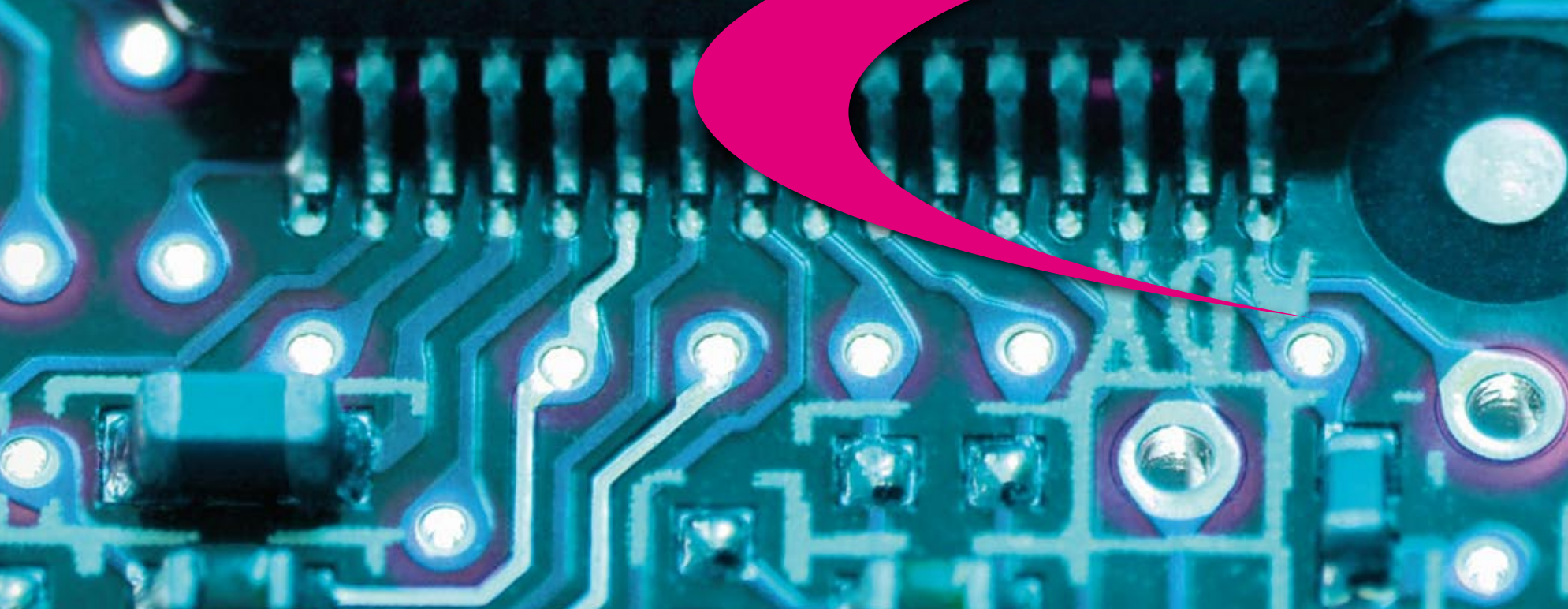
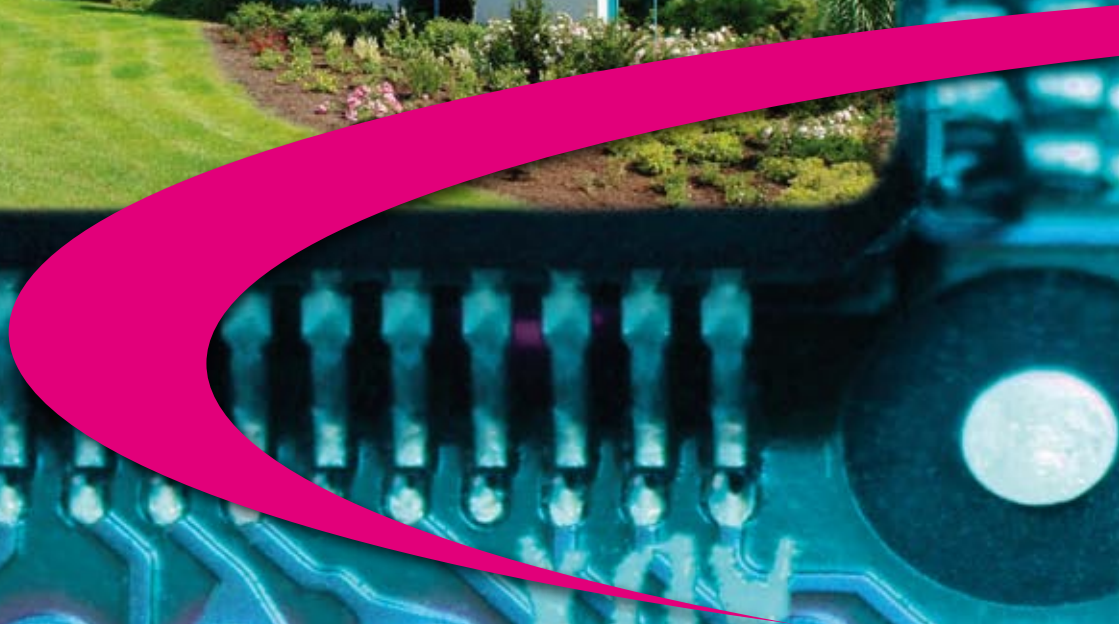


LAMINATES *4 life*

TECHNOLAM[®]

the laminate company

TECHNOLAM[®]



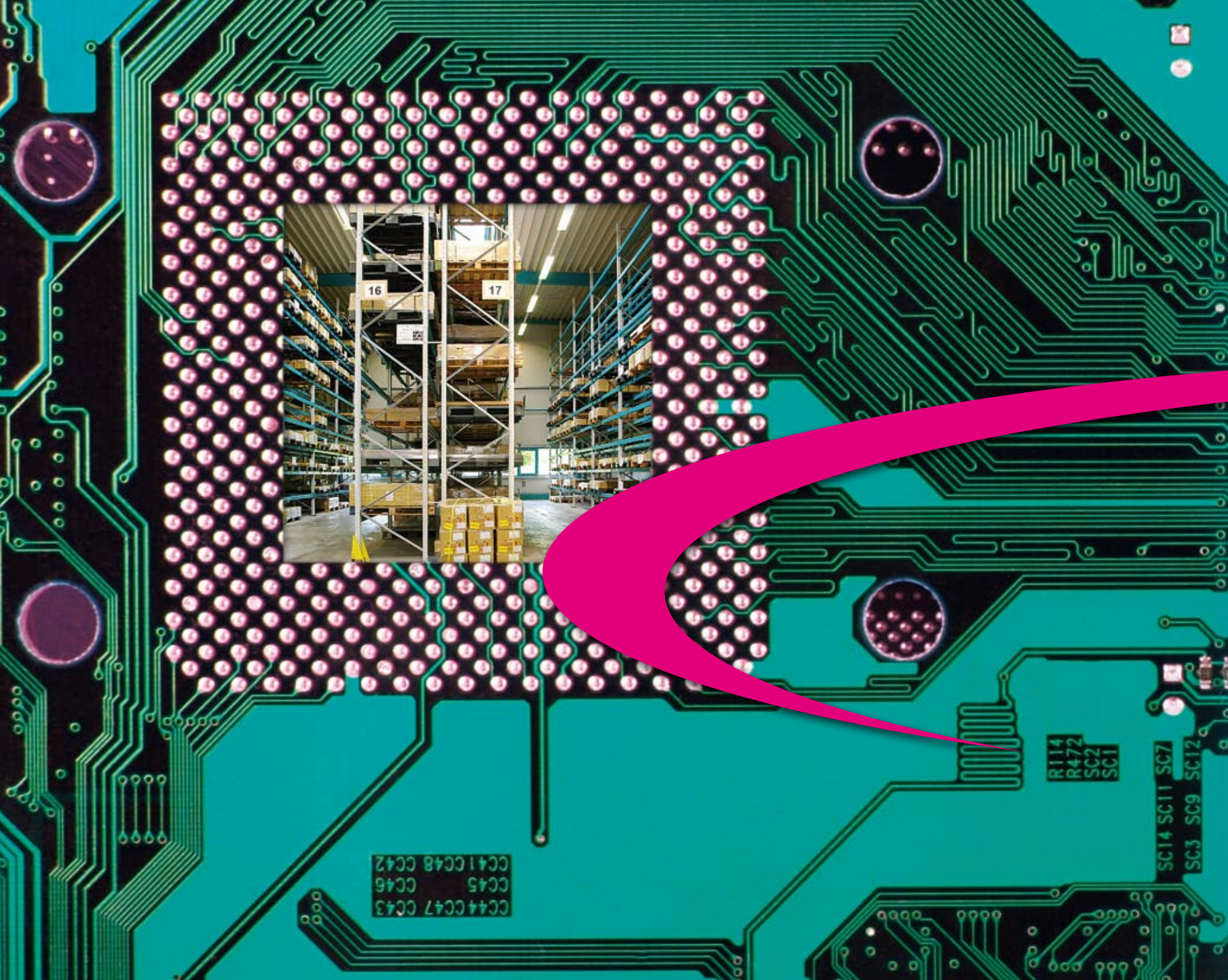
Your control centre for pioneering laminate solutions: TECHNOLAM

The TECHNOLAM shortcut:

Always working for you

- The world's biggest NAN YA CCL distributor
- Super-modern cutting centre for laminates and prepregs
- Logistics centre boasting instant delivery of more than 450 product variants
- Experienced engineers who can advise you comprehensively
- Highly motivated staff with many years' knowledge of the market

PCBs are everywhere today. Buildings automation, telecommunications, computers, the automotive industry, household electronics – not to mention the complete industry of control, regulation and measuring technology in general – our world is becoming steadily more electronic. And that means the demands on the base materials used in electronics are rising daily. TECHNOLAM has been a preferred partner to the electronics industry for more than 15 years. That's because we work exclusively with the top laminates made by world market leader [NAN YA](#). We also provide full service solutions and expert advice – and we are always close to our customers. That means you benefit from our expertise, quality and reliability. As a family-owned business with a strong foundation we think long-term and act quickly – now and in the future.



CC44CC47 CC43
CC45 CC46
CC41CC48 CC42

R114
R472
SC2
SC1

SC14 SC11 SC7
SC3 SC9 SC12

Your secret weapon against your rivals: top-level quality

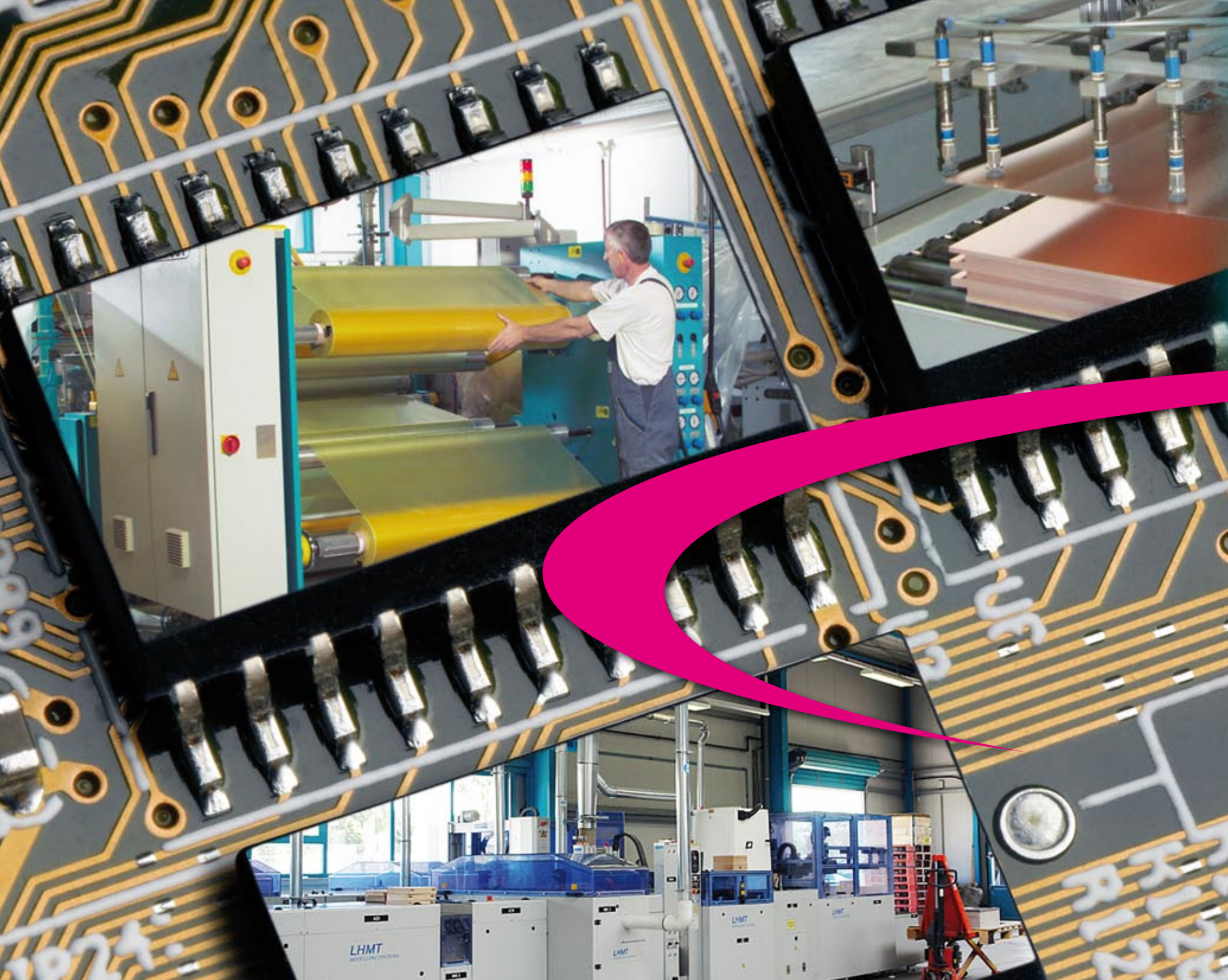
The products shortcut:

Ready for delivery – at any time

- Rigid FR4
- Thin laminates
- Prepregs
- High-performance base materials
- Halogen-free base materials

NAN YA manufactures the raw materials, which guarantees our high product quality.

Our aim is to supply the best base materials in the world – which is why we have been working exclusively with world market leader [NAN YA](#) for more than 15 years. For you that means not only a high-quality supply, but also a supply that remains constant and secure. [NAN YA](#) offers full raw materials integration, i. e. its own glass yarn, its own glass cloth, its own epoxy resin and its own copper foil. That is the kind of strength you will not find anywhere else in the market.



Your interface to customised products: our cutting centre

The technology shortcut:

For the benefit of your laminates

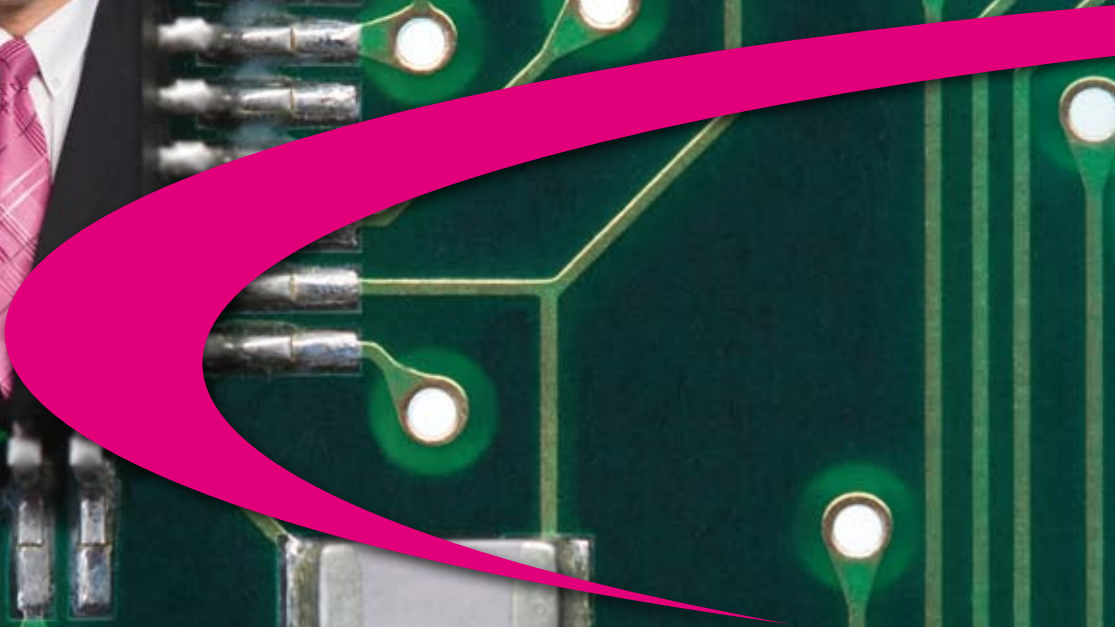
- Large high-bay warehouses and refrigeration buildings for wider stocks and top-speed delivery
- Bar-coded material movements
- A range of precise cutting systems for adapting laminates and prepregs to customer formats
- Embossing and laser-engraving cut products with key data
- Precision laser-based measurement of cut laminate thickness for quality control purposes
- Post baking of thin laminates

TECHNOLAM is ideally equipped for every new challenge, because we work with precision and using ultra-modern technology. We only use the very latest systems and tools for cutting, processing and packaging your base material. We then store your products correctly and securely. Furthermore, our comprehensive storage facilities with more than 450 product variants put us in a position to supply your products quickly and flexibly, at any time.



Günther Fuchs
Managing Director

Andreas Folge
Managing Director



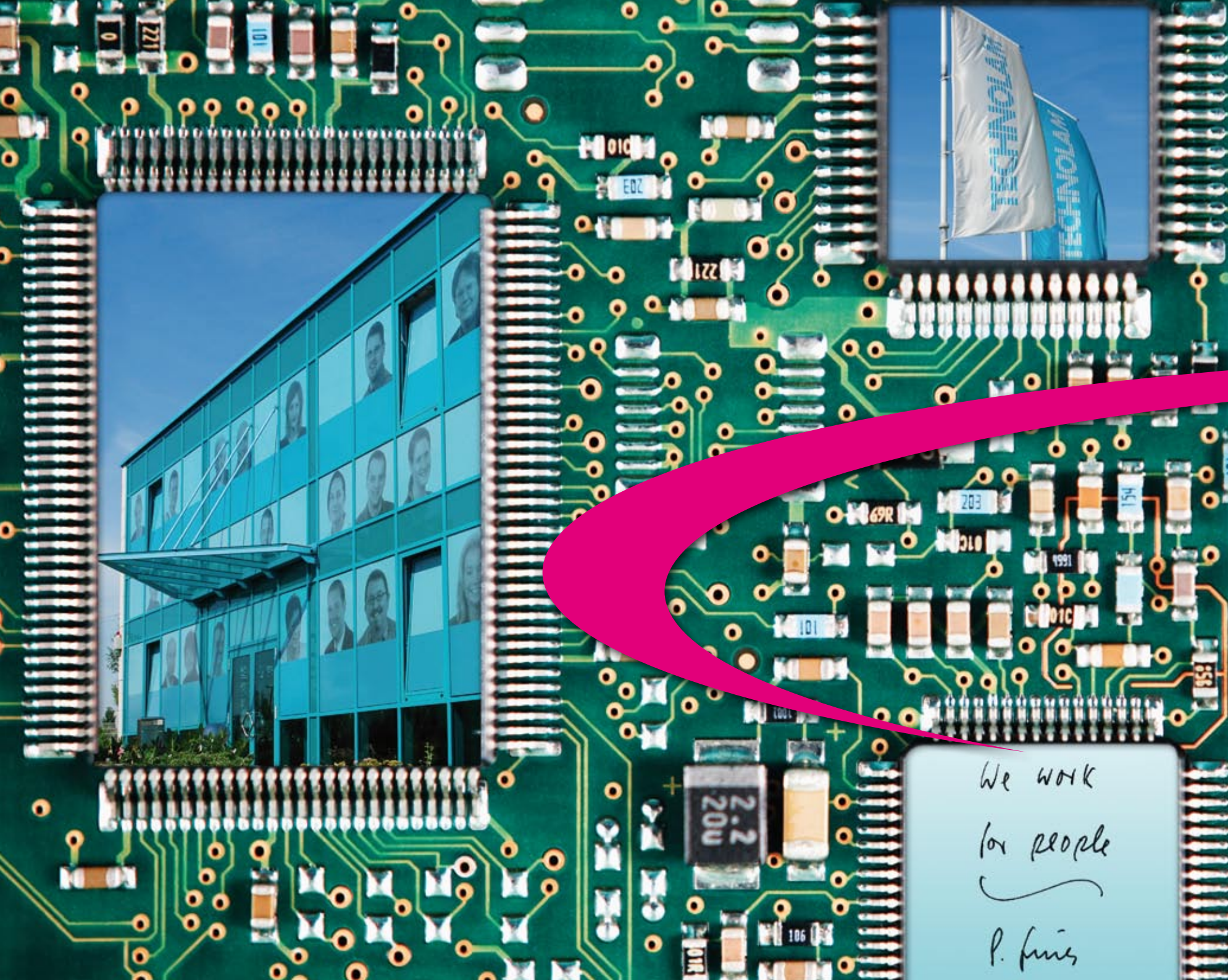
Your passage to the solutions of tomorrow: our consultancy

The consultancy shortcut:

Ready for you and your needs

- Best-performance base material solutions for all requirements
- From prototype to series production
- Immediate next-day response

As a full-service provider we don't just take care of all your needs with precision. Our experienced engineers with their far-reaching knowledge of products and markets can also advise you when it comes to choosing the right materials for the job. That means you will be on track for success from the very outset. We will work with you to develop products and logistics solutions that are fit for the future and which will catapult you to the front of the field.



We work
for people
P. fins

Driving your success on location: our employees

The values shortcut:

Directed towards your aims

- Respectful collaboration
- Based on trust
- An example for everyone
- Professionalism at all levels
- Sustainability as an objective
- Always giving our best

TECHNOLAM's employees are driven by one thing: to do everything they can for their customers. This is an enthusiasm which we foster by creating a fair and trusting environment in which every member of staff enjoys performing to their utmost. Our values are what guide the way we behave with one another, and with our customers as well. With team spirit and commitment we quickly develop solutions that meet your requirements exactly, and which put you permanently on course for success.



TECHNOLAM GmbH
Luxemburger Str. 9
53842 Troisdorf
Germany
Tel.: +49 (0)2241 8737-0
Fax: +49 (0)2241 806633
welcome@technolam.de
www.technolam.de